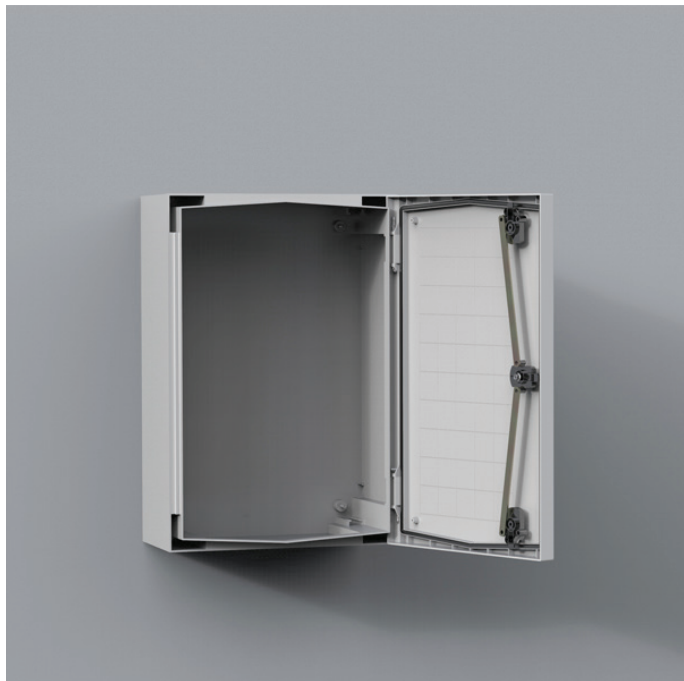


UCP/UCPT

POLYESTER COMPACT WALL MOUNTED ENCLOSURES



IP 66 | TYPE 4, 4X, 12, 13 | IK 10 /07

Eldon's range of compact polyester enclosures offers the users the maximum ingress protection and impact resistance ratings to IP 66 and IK 10 due to the fibre-glass reinforced polyester design. Eldon also wants the users to feel as safe as possible, the compact polyester enclosures design provides double insulation, providing the user with maximum protection. A large range of standard sizes and numerous mounting possibilities makes Eldon's compact polyester enclosures extremely flexible and easy to work with.

Material: Fibre-glass reinforced polyester.
UCPT viewing area: polycarbonate.

Body: Monoblock moulded 3 mm thick. Four holes for direct wall fixing. Without gland plate openings.

Door: Door with or without window and 180° opening. For UCP/UCPT750 and above a door support is supplied for easier closing. Sealing is by an injected one piece polyurethane gasket.

Lock: Double-bit 3 mm insert and 90° movement.
UCP/UCPT540 and above have three locking points.
Other locks are available as an accessory.

Temperature resistance: -50°C to 70°C in continuous use (peak temperatures up to 150°C).

Characteristics: Self extinguishing and halogen free. Double isolated according to EN61439-1. Rated insulation voltage $U_i=1000V$.

Protection: IP 66 | TYPE 4, 4X, 12, 13. Impact resistance IK 10 (IK 07 for enclosures with transparent door).

Finish: RAL 7035, precoloured raw material.

Delivery: Enclosure with door, fixing screws for the mounting plate and a self adhesive rain strip.

Approvals: CE, GOST, CSA and cULus_listed approvals apply to plain door enclosures only. For further approvals please contact Eldon's sales department.

UCP/UCPT

POLYESTER COMPACT WALL MOUNTED ENCLOSURES

Plain door

Enclosure dimensions					
H	W	D	N° of locking points	Weight (kg)	Item no.
315	215	170	1	2,80	UCP320
415	315	170	1	3,90	UCP430
515	415	230	3	6,90	UCP540
615	415	230	3	7,25	UCP640
735	535	270	3	11,75	UCP750
835	635	300	3	14,90	UCP860
1035	835	300	3	22,80	UCP1080

Transparent door

Enclosure dimensions					
H	W	D	N° of locking points	Weight (kg)	Item no.
415	315	170	1	3,95	UCPT430
515	415	230	3	7,10	UCPT540
615	415	230	3	7,40	UCPT640
735	535	270	3	11,80	UCPT750
835	635	300	3	15,00	UCPT860
1035	835	300	3	23,00	UCPT1080